



UPRISE | BATON ROUGE, LOUISIANA MAY 2026

Deployment-ready

Luis DePavia
Senior Innovation Manager, NuScale Power



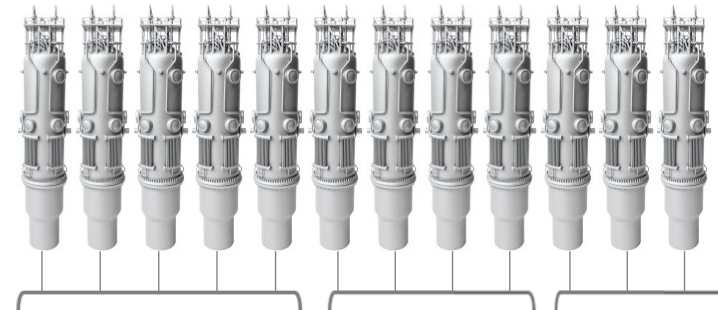
Modularity: Resilience and Flexibility



One Plant: 308 – 924 MW electric, 1000 - 3000 MW thermal



One Control Room
3 Operators



12 Modules and
Power Trains

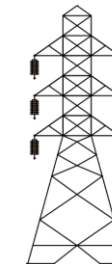
- No full plant refueling outage
- No single shaft
- Island mode
- Black start



Industrial Heat



Data Centers

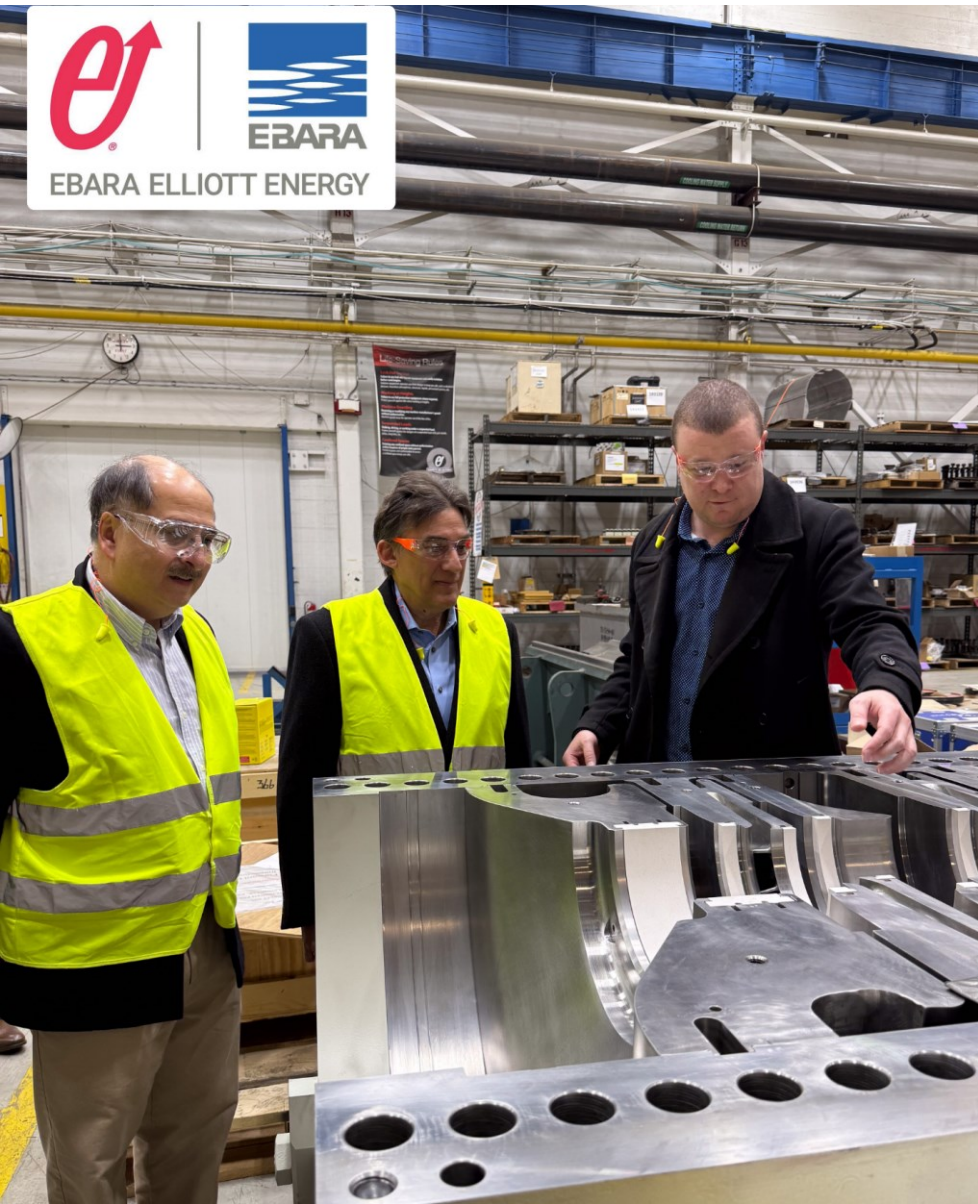


Grid

Individual modules
can be assigned to
different applications

- Flexibility
- BTM and Grid
- EPZ approved

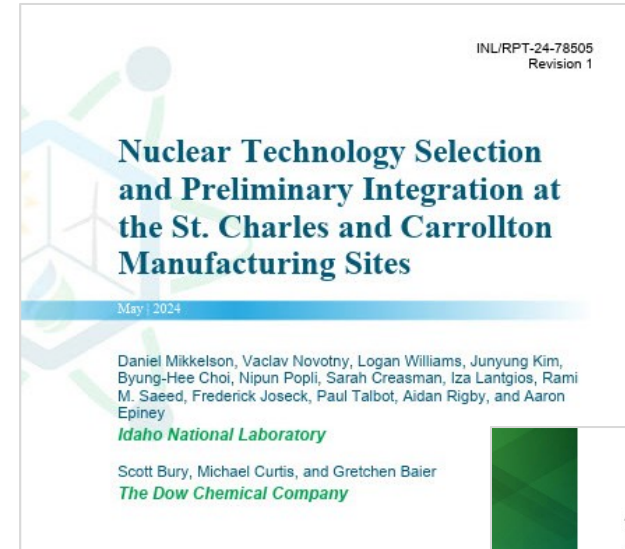
Industrial Process Steam, Demonstration and Field Testing



- NuScale and Ebara Elliott have established a program to demonstrate and field test a high temperature ($>500^{\circ}\text{C}$) steam compression system at commercial scale at a petrochemical plant.
- The compressor will be fabricated by Ebara Elliott and demonstrated at its test facilities in Jeannette, Pennsylvania in 2027.
- Following demonstration, the system will be transported and deployed at an industrial petrochemical site for field testing.
- NuScale and Ebara Elliott are seeking a petrochemical industry partner to deploy it at a petrochemical facility using steam in 2028.

Idaho National Laboratory, Oak Ridge National Laboratory

- INL Dow Study
 - Determine optimal mix of SMRs to supply electricity and steam for a large chemical facility
 - Conclusion: Using HTGRs or NuScale SMRs were statistically indistinguishable from an economic standpoint using current cost estimates
- Oak Ridge Study
 - Supply 1.3 million kg/hr, 400°C, and 73 MWe
 - NuScale modules combined with NG boilers to maximize profitability and reduce CO2
 - Conclusions: NuScale fully meets requirements and generates excess power for the grid
 - 12-module plant is the most profitable
 - 81% - 95% CO2 emissions reduction

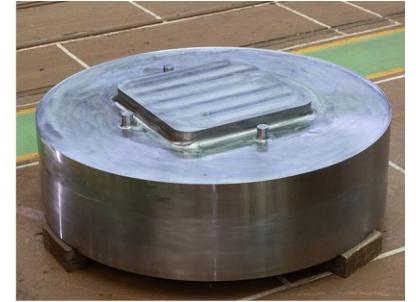
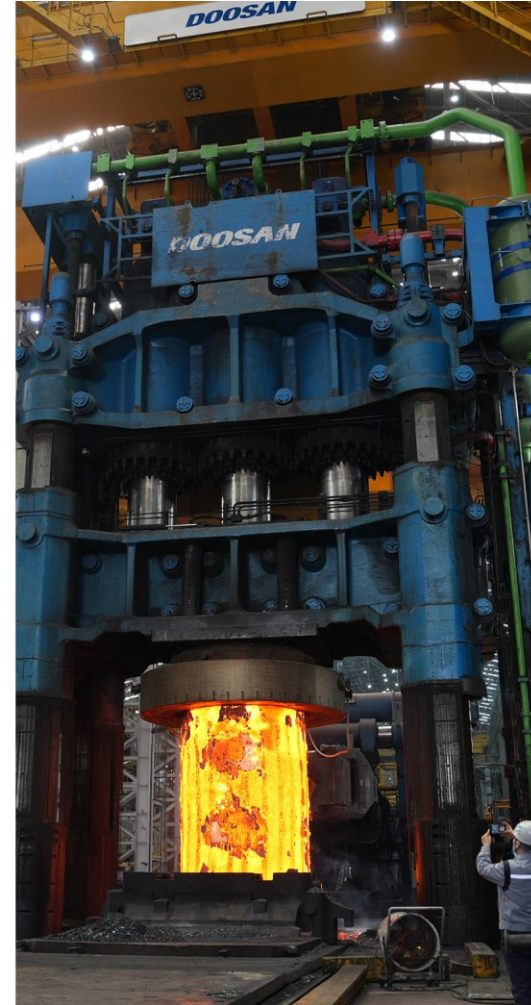


[INL Full Report
Summary NE-23-29899](#)

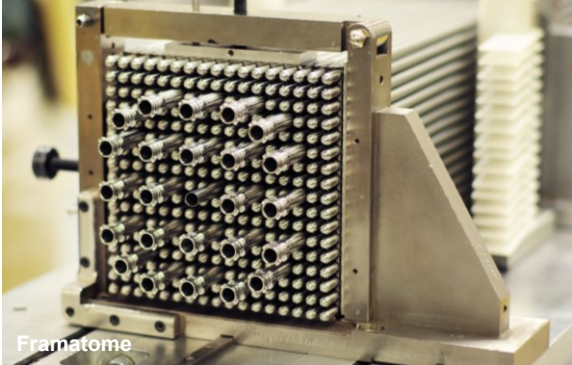
[Download ORNL Full Report](#)



Manufacturing Readiness, 12 Modules Being Fabricated



Established Global Supply Chain, 40 Key Suppliers



NuScale Power Modules

DOOSAN

sarens



IHI

**CURTISS -
WRIGHT**

Fuel Assemblies

framatome

Control Systems

Honeywell

Module Protection System

Paragon

Sensors and Instrumentation

sensia **CURTISS -
WRIGHT**
Rockwell Automation + Schlumberger
RS Reuter-Stokes

Reactor Building Crane

**PAR
SYSTEMS**

All images provided by supply chain vendors and used with permission.

REFERENCE SLIDE FOLLOWS

(ONLY IF REQUIRED TO EXPLAIN PROCESS STEAM SYSTEM)

Steam Conditioning via Compression/Heating

